

WILTSHIRE POLICE

# CPT Area Briefing

Amesbury Area Community Policing Team

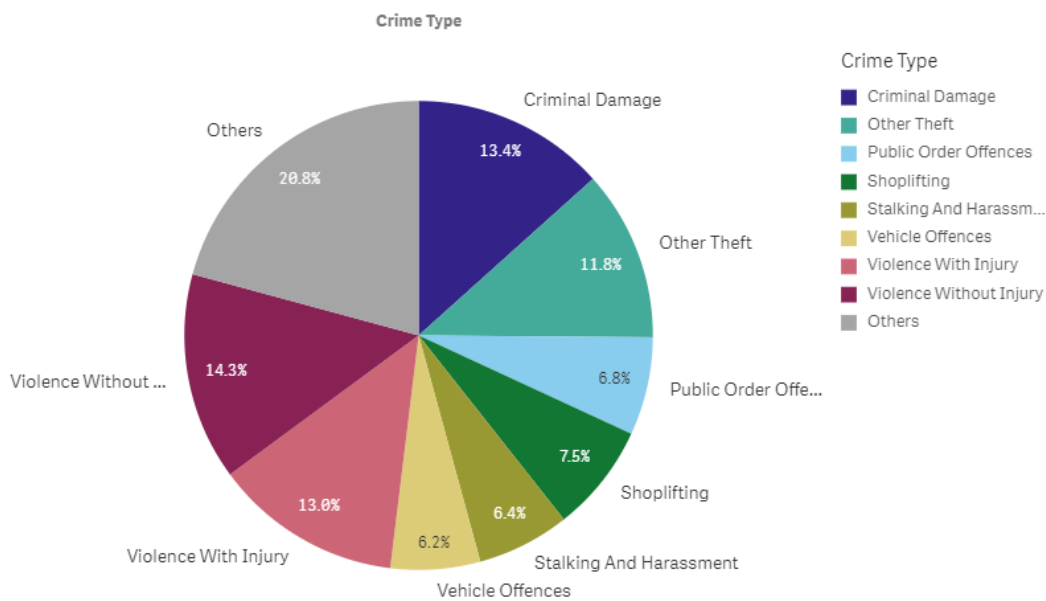


Proud to serve and protect our communities

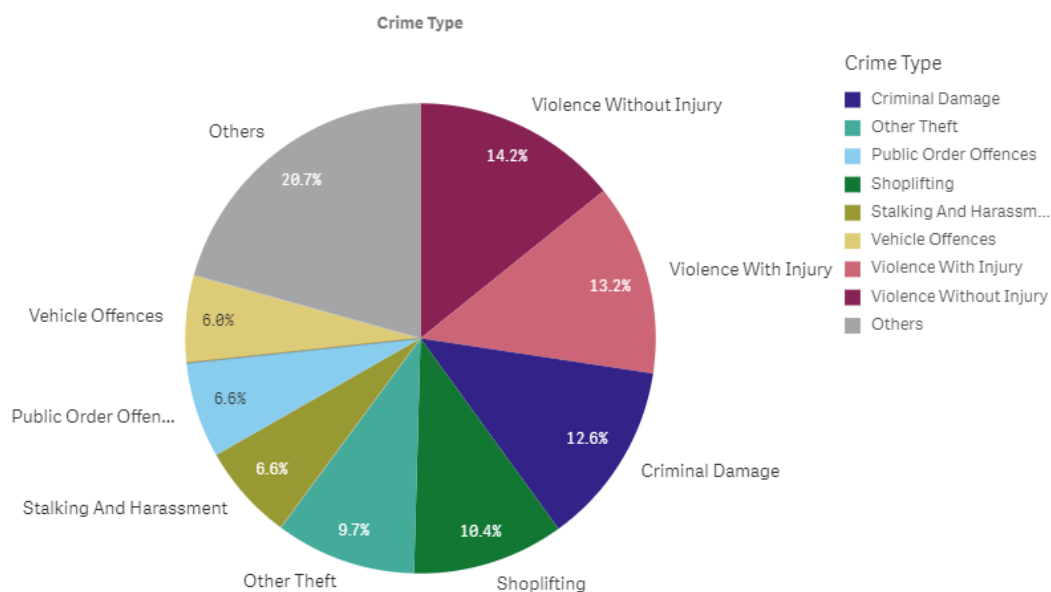
January/February 2020

## PERFORMANCE

Your Area - Five Highest Crime Groups (Previous 12 months)



Force Area - Five Highest Crime Groups (Previous 12 months)



Wiltshire South and South East CPTs - crime and incident demand for the 12 months to November 2019

WILTSHIRE POLICE

# CPT Area Briefing

Amesbury Area Community Policing Team



Proud to serve and protect our communities

January/February 2020

## Force-wide

- Wiltshire Police has had an increase in the volume of recorded crime by 4.5% in the 12 months to November 19 and continues to have one of the lowest crime rates in the country.
- Our service delivery remains consistently good.
- In November, we received 8,234 999 calls which we answered within 5 seconds on average and 11,604 CRIB calls which we answered within 1 minutes 28 seconds on average.
- In November, we also attended 1,594 emergency incidents within 10 minutes and 30 seconds on average.
- Wiltshire Police has seen a 10% reduction in vehicle crime and 9% in residential burglaries in the 12 months to November 2019.
- The Crime Survey of England & Wales recently ranked Wiltshire as one of the top forces (78.3%) nationally for public confidence. It covers the 12 months to March 2019.  
The publication can be found here: [WWW.CRIMESURVEY.CO.UK](http://WWW.CRIMESURVEY.CO.UK)

For more information on Wiltshire Police's performance please visit:

PCC's Website - <https://www.wiltshire-pcc.gov.uk/article/1847/Performance>

HMICFRS Website - <https://www.justiceinspectorates.gov.uk/hmicfrs/police-forces/wiltshire/>

Police.uk - <https://www.police.uk/wiltshire>

WILTSHIRE POLICE

# CPT Area Briefing

Amesbury Area Community Policing Team

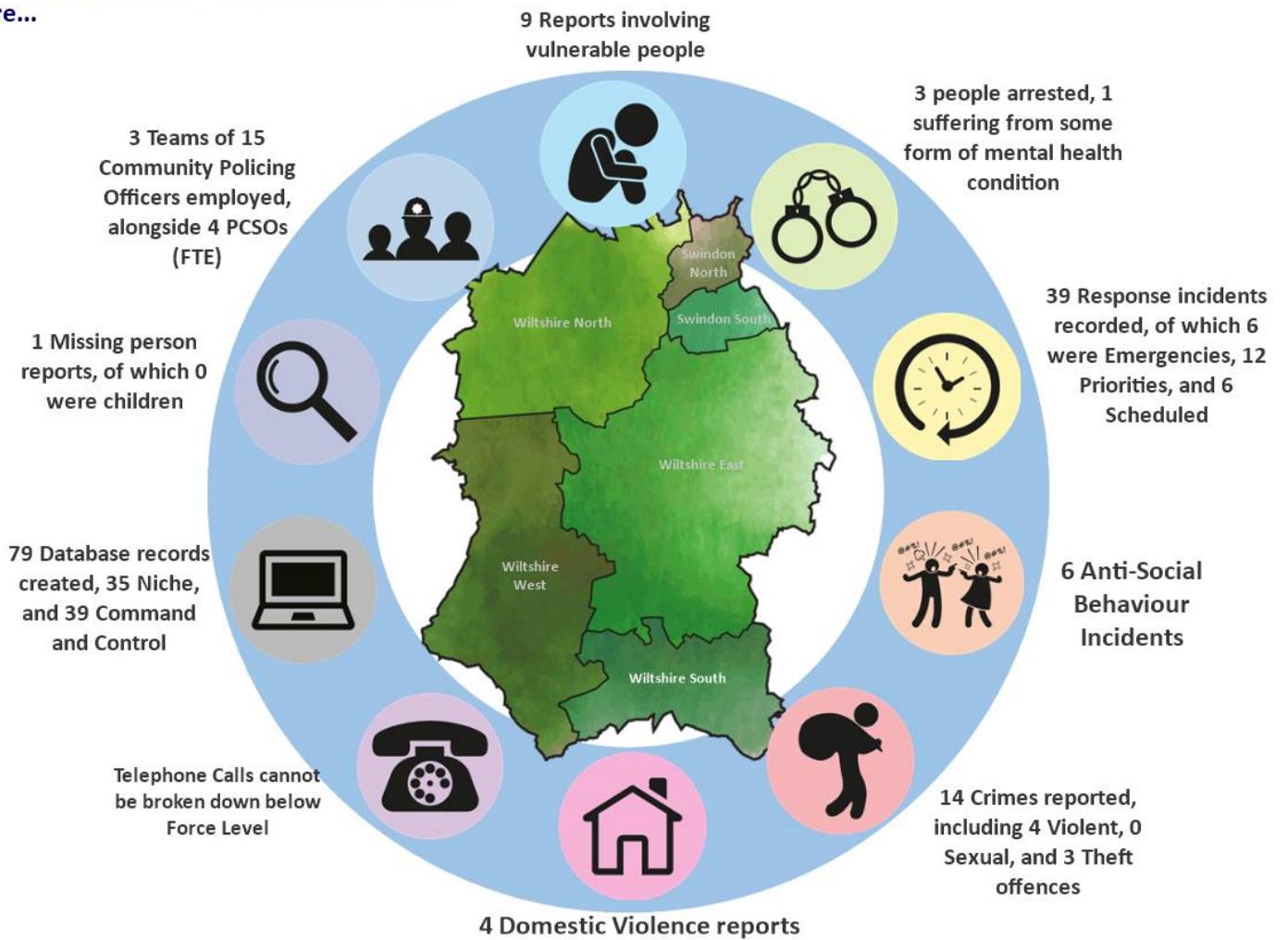


Proud to serve and protect our communities

January/February 2020

## Area specific

On an average day in Wiltshire South there were...



Wiltshire South/ South East CPT Demand Overview – 12 months to November 2019



WILTSHIRE POLICE

# CPT Area Briefing

Amesbury Area Community Policing Team



Proud to serve and protect our communities

January/February 2020

## HIGH LEVEL CPT UPDATES:

Happy New year to all of you from South East Community Policing Team. We hope you all enjoyed the festive season. We are pleased to report that the month of December was a positive month for our policing teams with minimal disorder reported and some really successful proactive operations.

### **Proactive operations and good news stories.**

The 1<sup>st</sup> of December marked the start of our new neighbourhood section of our community policing teams. This is great news for the local community as this involves a dedicated Sergeant, 3 PC's and 8 PCSO's. The PCSO's area will remain unchanged and they will continue the great work they already do in the community and will still be your main points of contact.

Sergeant Lucy Thorne has taken up the post of neighbourhood Sergeant, who you will know was previously my deputy, so she is familiar with the area and key issues we have addressed in the past 6 months.

The positive uplift also involves us recruiting 3 PC's onto Neighbourhood. Many of you will have worked with Lucy Wileman and Juliet Cox as community coordinators and I am thrilled that Juliet and Lucy will become neighbourhood PC's and continue their great work in the community, focusing on solving long term problems and emerging crime series.

PC Sharon Duggan was successful in taking up the third post. PC Duggan comes from the response section at South East Policing Team and is well familiarised already with the area, she has taken on this post as of 8<sup>th</sup> January. In order to ensure all areas within the South-East hub receive the best service we have decided to split the areas of responsibility for the PC's as below:

PC Lucy Wileman- Amesbury Town

PC Juliet Cox- Amesbury Rural, Larkhill and Bulford

PC Sharon Duggan- Tidworth and Ludgershall.

Our implementation of the Neighbourhood team will form one of our priorities into January and February. This will involve continuous liaising with our community and partners with a focus on youth intervention and understanding where our key areas are for anti-social behaviour and repeat crime patterns. We are always keen to gain feedback on these changes so please feel free to contact us with anything you feel may have made a difference or we could improve on. We can all be contacted on [AmesburyAreaCPT@wiltshire.pnn.police.uk](mailto:AmesburyAreaCPT@wiltshire.pnn.police.uk).

WILTSHIRE POLICE

# CPT Area Briefing

Amesbury Area Community Policing Team



Proud to serve and protect our communities

January/February 2020

## Drink Drive Campaign

The start of December saw our force wide drink drive campaign get underway, our South East Team conducted several proactive operations for drink drivers resulting in regularly stop checks of vehicles and several drivers prosecuted for drink driving offences in the area. This is still a disappointing statistic that people are still choosing to take this risk however please be reassured that even though the festive period is over, our officers are always patrolling for and stopping vehicles they suspect maybe over the legal limit for drugs and alcohol, this is something we take very seriously and hope to reduce with continued presence of police in our area.

## Rural Crime operations

One of priorities set for the month of December was set as Rural Crime targeting. I am pleased to report that our rural crime team supported by our community policing team have conducted 2 planned operations on 6<sup>th</sup> and 20<sup>th</sup> December. This was a great success which led to 3 persons being arrested for hare coursing and some great work by our local PCSO's with the help from local farmers to catch these suspects, who remain under investigation.

Christmas Eve saw some great proactive work by our community policing team and specialist dog section when they intercepted hare coursers in the act, which led to vehicle seizures and 4 persons were arrested for trespassing and hare coursing offences. There is some exceptional proactive work being carried out by our teams and that will continue into the New Year.

## Community Speed watch

Supporting our community speed watch colleagues was one of our priorities for December. Whilst it is disappointing that driver's still speed through our communities, our teams have been busy trying to target these drivers. On 3<sup>rd</sup> December, we spent some time in Middle Woodford and spoke with 4 drivers for speeding. On 11<sup>th</sup> December, members of the team spent time in Enford with the community speed watch team and on 12<sup>th</sup> December we were in Shrewton where 5 vehicles were stopped and advised and 1 speeding ticket issued to a driver. This continues to be one of our priorities into the New Year.



PC Webster and PCSO Roylance in Shrewton.

## Proactive drugs warrants

WILTSHIRE POLICE

# CPT Area Briefing

Amesbury Area Community Policing Team



**Proud** to serve and **protect** our communities

January/February 2020

You may have seen in local media that a positive drugs warrant was conducted on Monday 23<sup>rd</sup> December on Tidworth Road, Ludgershall. This led to a quantity of Class A drugs being located at the address and occupants being investigated for the supply of drugs. The supply of drugs is something we take very seriously and our community officers are busy trying to identify where this is occurring and we will be continuing this proactive work in the coming months.

## **Awards and recognition**

### **PC Lucy Smith- Award for excellence in partnership working**

Many of you will have met and worked with PC Lucy Wileman over the previous years, Lucy is a fantastic community officer with her passion of the role and knowledge of her area we felt it was important for Lucy to be recognised for her excellent work in partnership working and community policing. Lucy was nominated and won the force award for excellence in partnership working. We are incredibly proud of Lucy for this award, she has worked hard to build strong relationships in the community with parents, young people, local communities and businesses and we are thrilled she remains part of our team.

### **PC Lyndsey Smith - Chief Constable's Commendation**

When on patrol during a night shift, Police Constable Lyndsey Smith was alerted by a member of public who said there was a man on the A303 flyover who appeared to be in need of help. She arrived to find a man in an emotional state, who had one leg over the bridge.

With quick thinking, she physically pulled the man back over the bridge and single handedly restrained him, keeping him safe until help from colleagues arrived.

This was an exceptional example of police work and the types of incidents our team can be called to and we are extremely pleased that PC Smith has been recognised for her outstanding actions.

WILTSHIRE POLICE

# CPT Area Briefing

Amesbury Area Community Policing Team



Proud to serve and protect our communities

January/February 2020



PC Wileman and PC Smith at the Wiltshire Police Awards night in December.

Other news....Some of our December highlights in pictures.....



PCSO Mark Douse and PCSO Sam Flippance enjoying festivities at Kingsgate Christmas Fayre.

WILTSHIRE POLICE

# CPT Area Briefing

Amesbury Area Community Policing Team



Proud to serve and protect our communities

January/February 2020



Inspector Liz Coles with Amesbury Mayor Fred Westmoreland, the Deputy Lord lieutenant, the High Sheriff and staff and pupils at the opening of Kingsgate primary school.



PCSO Jon AKEHURST at the tree of light celebration in Amesbury.



WILTSHIRE POLICE

# CPT Area Briefing

Amesbury Area Community Policing Team



Proud to serve and protect our communities

January/February 2020



PCSO Roylance and PC Juliet Cox at Shrewton Primary School

## Targeted patrols and up and coming community surgeries

### Target Patrols

#### Sainsburys's Durrington

Following a report of a disorder at this location. A reassurance patrol commenced on 26<sup>th</sup> November. In total 25 patrols took place and we are continuing to monitor this.

### Consultations and up and coming meetings.

- 17<sup>th</sup> January – Evergreen Cafe – Pc Lucy Wileman
- 04<sup>th</sup> February – Amesbury Town Council Meeting – PcsO Douse
- 11<sup>th</sup> February – Pubwatch – Pc Wileman
- 12<sup>th</sup> February – Amesbury Residents Committee & Pubwatch – Insp Coles/Ps Thorne & Pc Wileman
- 13<sup>th</sup> February – I.A.G Meeting – Insp Coles/Ps Thorne & Pc Wileman
- 03<sup>rd</sup> March – Tidworth Town Council Meeting – Pc Wileman
- 03<sup>rd</sup> March – Amesbury Town Council Meeting – Insp Coles
- 10<sup>th</sup> March – Amesbury Pubwatch – PcsO Flippance

WILTSHIRE POLICE

# CPT Area Briefing

Amesbury Area Community Policing Team



**Proud** to serve and **protect** our communities

January/February 2020

Ludgershall & Tidworth NTG – Venue to be confirmed – 25<sup>th</sup> February – Pc Wileman/Pcso Jones & Pcso Akehurst

Amesbury/Durrington/Bulford/Figheledean NTG – Amesbury Police Station – Thursday 26<sup>th</sup> March – Pc Wileman & Pcso Douse

Amesbury Rural NTG – Amesbury Police Station – 26<sup>th</sup> March at 1830.

You can find out more about Wiltshire South East CPT, including news stories and contacts for local officers, on our website: <https://www.wiltshire.police.uk/WiltshireSouthEast>

## Wiltshire South East Team



Inspector Liz Coles



Sergeant Lucy Thorne

### Community Co-ordinators:



PC Lucy Wileman (Amesbury)



PC Sharon Duggan – Tidworth and Ludgershall.

PC Juliet Cox (Amesbury Rural, Bulford and Larkhill)

WILTSHIRE POLICE

# CPT Area Briefing

Amesbury Area Community Policing Team



Proud to serve and protect our communities

January/February 2020

## LOCAL PRIORITIES

PRIORITIES FOR WILTSHIRE SOUTH EAST CPT	UPDATE
<b>Priority 1:</b>	
Community Speed Watch	Officers will continue to support community speed watch and conduct speeding checks.
<b>Priority 2:</b>	
Rural Crime	Our proactive and robust approach to tackling rural crime will continue.
<b>Priority 3:</b>	
Implementation of the neighbourhood team	Developing relationships with partners and the community to identify key areas of repeat issues in the community focusing on youth engagement and early intervention.

WILTSHIRE POLICE

# CPT Area Briefing

Amesbury Area Community Policing Team



Proud to serve and protect our communities

January/February 2020

## HIGH LEVEL PCC UPDATES

- **Precept Consultation** – From 6 January, I will be consulting with residents and businesses in Wiltshire and Swindon on what they would be prepared to pay as part of their council tax bill next year's towards local policing. I am still waiting for notification from the Home Office on what our settlement will be in Wiltshire for 2020/21 and hope to be in receipt of this soon. I strongly encourage you to [submit your feedback on my website](#).

## HIGH LEVEL FORCE UPDATES

- We continue to implement **changes in our community policing teams** to better meet demand in our different patches. It is a phased approach and as of December the boundaries of our community policing teams changed with their names also changing to reflect the areas covered.

**The new list is:** Swindon Area CPT, Chippenham Area CPT, Royal Wootton Bassett Area CPT, Trowbridge Area CPT, Warminster Area CPT, Salisbury Area CPT, Devizes Area CPT and Amesbury Area CPT.

- **Changes to 101 system** – In mid-December the options available when members of the public call 101 have changed to allow for to be connected directly to some departments. They will also no longer be taking reports of shoplifting unless it is in progress, an offender is detained or there was violence to any members of the public or staff. Instead callers are encouraged to report the crime online and submit any available CCTV.

## GET INVOLVED

- You can keep up to date with the latest news in your area by signing up to our Community Messaging service – [www.wiltsmessaging.co.uk](http://www.wiltsmessaging.co.uk)
- You can follow your CPT on social media <https://www.wiltshire.police.uk/Followus>

WILTSHIRE POLICE

# CPT Area Briefing

Amesbury Area Community Policing Team



**Proud** to serve and **protect** our communities

January/February 2020

- More information on your CPT area can be found here: [www.wiltshire.police.uk](http://www.wiltshire.police.uk) and here [www.wiltshire-pcc.gov.uk](http://www.wiltshire-pcc.gov.uk)

## FEEDBACK/ACTIONS TAKEN